



RURAL DEVELOPMENT INNOVATIVES OF INDONESIA FOR POVERTY REDUCTION

**HEAD OF THE CENTRE
FACILITATION OF COOPERATION
MINISTRY OF HOME AFFAIRS OF THE REPUBLIC OF
INDONESIA**

**Dr. NELSON SIMANJUNTAK
HP. +628121064102**

Fiji, 16 – 20 April 2018

Indonesia

Province : 34

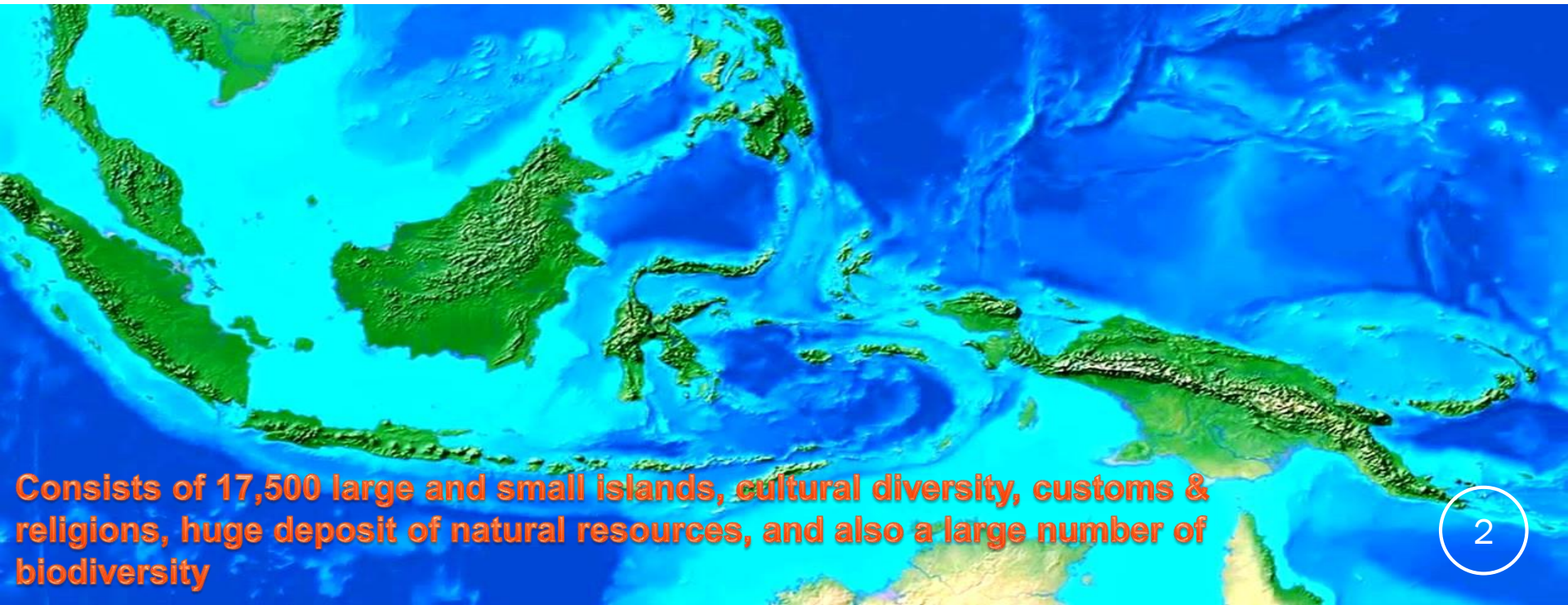
District : 415

City : 93

542 Autonomus Regions

Total Area: 1,913,578.68 km²

Total Population: 251,857,940 people



Consists of 17,500 large and small islands, cultural diversity, customs & religions, huge deposit of natural resources, and also a large number of biodiversity

THE BEAUTY OF BALI



BALI TEMPLE



PURA TANAH LOT



SUBAK, JATILUWIH



FIJI ISLAND





INTEGRATED AGRICULTURE SYSTEM (INTENSE) BALI PROVINCE INDONESIA

- Integrated agriculture system (Intense) is one of the priority program in Bali Province Indonesia in order to enhance agricultural sector's role to support Bali Mandara.
- During the period of 2009-2013 Intense developed into 400 sites out of 1,000 targeted sites in 2018 in 9 regencies/cities. Total budget spent by Bali Government Province for Intense 2009-2013 was more than Rp 8 billion from social assistance and CSR funds.
- Intense enhances relation among farm activities and utilizes farm wastes inside the groups. Intense orients its activities based on agriculture without waste or zero waste and produces 4 F (Food, Feed, Fertilizer and Fuel).

INTENSE CONCEPT

- Intense integrates agricultural sector with its supporting sectors (vertical or horizontal) in accordance with the potential and characteristic of the region.
- Integration activities on zero waste farming and producing 4F(Food, Feed, Fertilizer and Fuel).
- Main activities of crop and livestock cultivation categories; Crop wastes processed for animal feed and animal feed in dry season and livestock waste are processed into biogas, bio urine, organic fertilizer, and bio pesticide.
- Institutional strengthening of farmers and the development of agribusiness/ economic enterprises in rural areas.

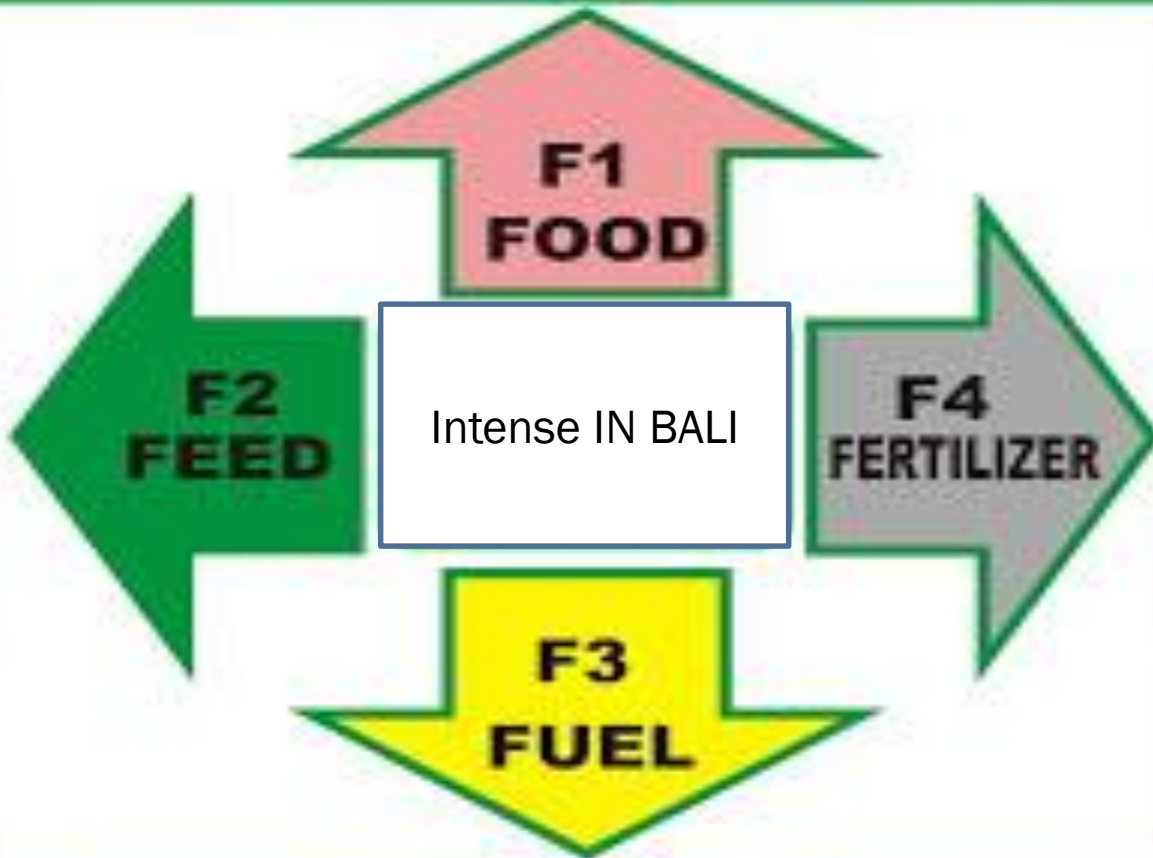
INTENSE TARGET (INDICATOR OF ACHIEVEMENTS)

1. Integration of technological innovation especially in agriculture, fishery and forestry (intensification, extensification, organic agriculture).
2. The growth of livestock population, especially Balinese Goat and cattle and self-provision of organic fertilizers and pesticides and biogas (household scale).
3. The growing availability of high quality animal feed throughout the year.

Continue..

4. Growing diversification of farming business (vertical and horizontal = agribusiness) and productive economic business especially management of agricultural products.
5. Strengthening of farmer institutions, development of agricultural infrastructure, and sustainable agriculture development.
6. Increased farmer income and the realization of Bali's "Mandara".

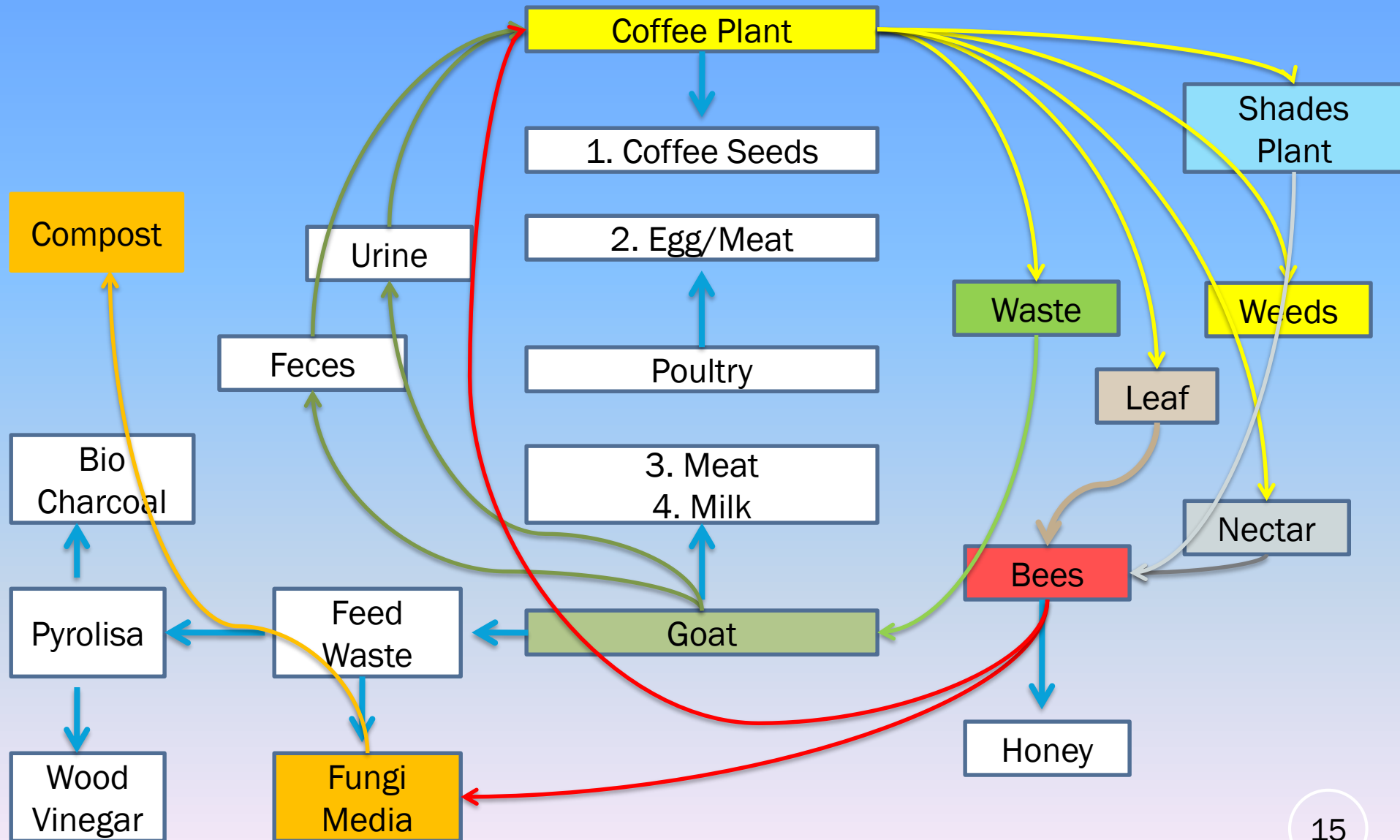




INTENSE'S PROGRAM IDEA IS AIMED AT:

- Promoting farmers' welfare, poverty alleviation and unemployment and linkage with other programs in order to develop sustainable rural economy in a sustainable manner.
- **Implementation of Intense activities also involves** related Regional Work Unit (SKPD) of Local Government at the Province and Regency level in the process of assistance, facilitation of supporting infrastructure and other assistance.

INTENSE EXAMPLE



PUCAK MANIK FARM UNIT



Cattle Barn



Organic fertilizer



Artificial Insemination



PUCAK MANIK FARM



Cattle Feed



POC BIO Urine



BIO GAS

Building Model of Intense'S Pilot Unit



Instalasi Bio Urine



OUT
LET

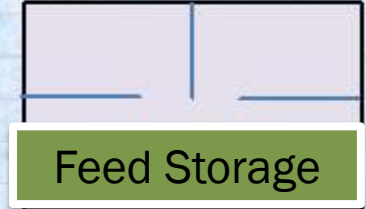
DIGES
TER

INLET

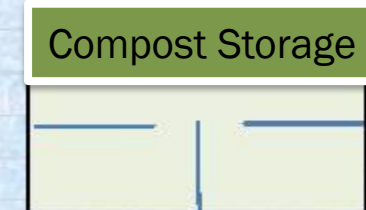
Cattle Barn



-Kandang Koloni



Feed Storage



Compost Storage



Rumah pakan/Rumah
Kompos

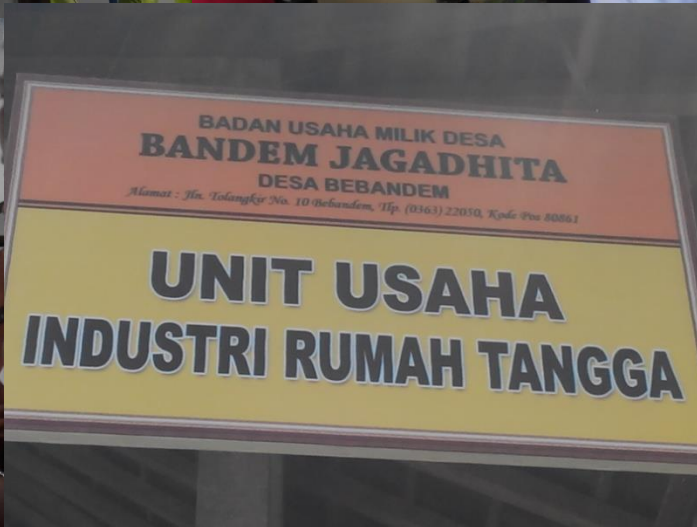
IMPACT TO FARMER WELFARE

- Livestock-farm integration implemented by Intense boosts farmers' group business, job opportunity, and supplies of food, feed, fertilizer, organic pesticide, and bio gas to meet group members' demand and for commercial purpose supported by local governments.
- In the future it is expected that Intense becomes an integrated agriculture-energy program for food self-reliance and farmers' welfare. It is as also expected that this program sustains regardless the changes in local government leaders and all attached policies



Field Study Mr. Priya Ranjan, Director of International Cooperation & Rural Connectivity, Ministry of Rural Development (MoRD), Government of India (Bali, 2013)



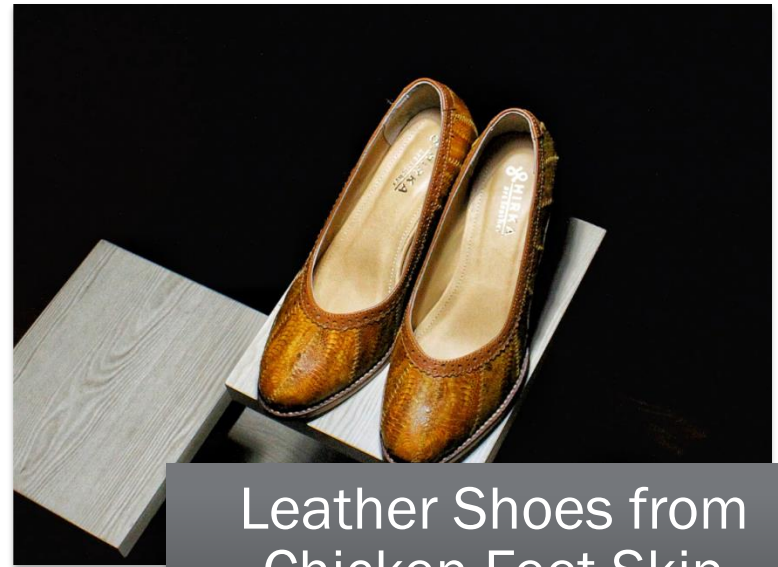




ANOTHER INNOVATION FROM INDONESIA



Salacca Coffee from
Snakefruit Seed Waste



Leather Shoes from
Chicken Feet Skin

2

Salacca Coffee

- Founded by Eko Yulianto in 2016 in Wonosobo, Central Java.
- Transforming Snakefruit Seeds (Waste) into Valuable Commodity (Coffee).

Benefit:

1. Rich on Polyphenol.
2. Relieve Uric Acid and Hypertension.
3. Cheap.
4. Easy to Produce.



How To Make Salacca Coffee



Prepare
and
Clean
Snakefruit
Seeds



Dry the
Seeds
for 1
week



Roast
the
Seeds



Mash
the
roasted
Seeds



Filter the
Mashed
Powder
to Get
the Best
Coffee



Salacca
Coffee is
Ready to
Drink

3

Leather Shoes from Chicken Feet Skin

- Founded by Nurman Farieka Ramdhany in 2017 in Bandung, Central Java.
- The Idea has been developed 15 Years ago by his father, then Nurman continue to further develop it.
- Transforming Chicken Feet Skin, which traditionally used to be processed as crackers and snacks, into more valuable commodity (shoes).
- Have more unique texture than cowhide.



How to Process Chicken Feet



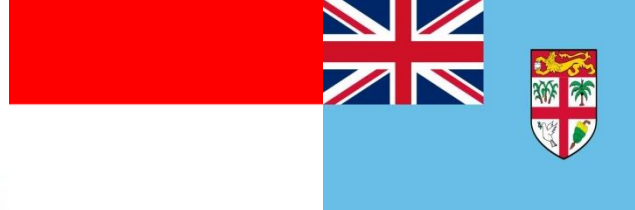
Peel Chicken Feet Skin with 1mm-2mm thickness.



Chemical Conditioning the Chicken Feet Skin into leather like material, which usually takes 1 week.



Processed the Conditioned Skin to Shoes Normally.



Thank you
For Your Attention